

MagTrack+



by



MagTrack+ by Matrix iQ Implementation Guide

V1.1 – February 2024

This document contains proprietary information from Matrix iQ and is not disclosed or used except in accordance with applicable agreements.

MagTrack+ - Implementation Guide

Table of Contents

MagTrack+ - Implementation Guide	1
Introduction	2
Solution Overview	2
Planning and Preparation	3
Hardware Installation	3
Requirements and Prerequisites	3
Setup and Deployment	4
Install the Solution Add-In	4
.Json File for New Service Account	6
Open the Add-In	6
Adding Devices	7
Adding a New Asset in MyGeotab	7
Accessing and Navigating the System	8
Logging into your account	8
Adding users to Geotab	8
Navigating the System	10
Tracking and Locating the Unit on the Map	10
How to Edit Vehicle Details	11
How to change the mode of the MagTrack+	12
Adding an Alert	13

Introduction

This implementation guide is provided to Geotab resellers and customers as part of their onboarding process for the MagTrack+ asset tracking solution by Matrix iQ. This provides the steps necessary to add the MagTrack+ device to the MyGeotab Portal client for visualisation and alert management.

Solution Overview

MagTrack+ is a guardian for both powered and non-powered high-value assets, engineered for longevity. With multiple location reporting frequencies and an arsenal of location methods – from GPS satellite precision to cell tower accuracy and Lora – MagTrack+ guarantees that your assets are always within your reach.

MagTrack+ is a magnetic recovery device with advanced location reporting. It's easy to self-install and designed to last up to 5 years on a single charge (dependent on mode). MagTrack+ solves the traditional problem of tracking devices being easy to find and remove by magnetically attaching anywhere on a vehicle or asset.

- 5 YEAR LIFE: Daily pings extend battery life, increase as needed.
- GPS MOVEMENT: Location & speed configurable reporting intervals (moving or stationary)
- NOTIFICATIONS: Custom alerts to detect movement
- LOW BATTERY ALERTS: Eliminate risk of losing an asset
- STORE & FORWARD: Store up to 1,000 messages if signal is lost.
- ELEMENT PROOF: IP65 waterproof / -4°F – 140°F

Stick it. Track it. Recover it.

Planning and Preparation

Implementing MagTrack+ into the MyGeotab platform only requires a couple of steps to be fully functional. Before getting started, there are a couple of items to be prepared for.

Hardware Installation

The MagTrack+ is magnetically mounted to any metal surface or an optional metal plate can be ordered to affix to a non-metal surface.

1. Attach to a metal surface, additional security using cable ties is optional.
2. Place the MagTrack+ device inside the asset/vehicle. Best practice is to ensure that it is hidden from plain sight and has at least one open point. Fully enclosing the unit deep inside an asset will affect the ability to find a GPS position.

Requirements and Prerequisites

1. Platform access via a recent version of major browsers:
 - Mozilla Firefox
 - Google Chrome
 - Apple Safari
 - Microsoft Edge

These are known as "evergreen" browsers because they automatically update to their latest version. Safari, though not strictly evergreen, is updated along with the OS X operating system. With an average of only 6 weeks between evergreen browser releases, specific version numbers change so rapidly they lose their usefulness. As a result, we test against the latest version of each browser and will provide support for any recent version.

Though other browsers may work, we do not attempt to resolve problems with browsers other than those listed above. Browsers that have been developed to comply with the W3C guidelines and specifications, including mobile browsers, should operate successfully.

2. Must have a .json file to install add-in.
3. Must procure MagTrack+ devices (the hardware component of the solution)

Setup and Deployment

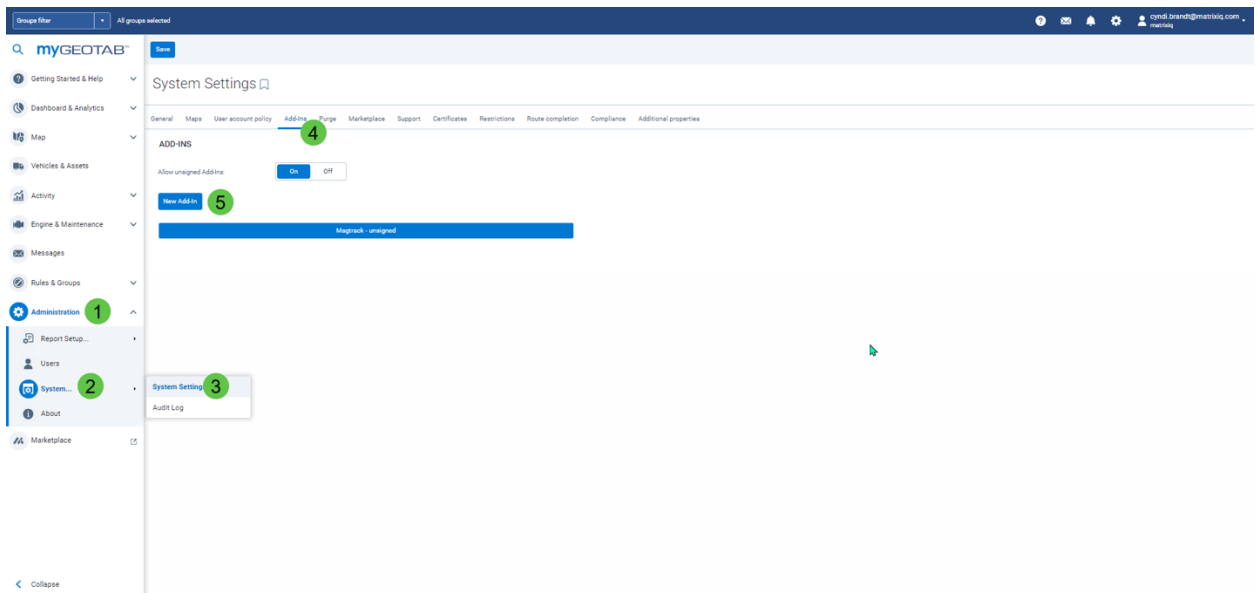
The list below outlines the steps and instructions needed to set up the MyGeotab Portal administrator to integrate the MagTrack+ device on the MyGeotab Portal.

1. Install the Add-In
2. Adding Devices
3. Accessing and Navigating the System

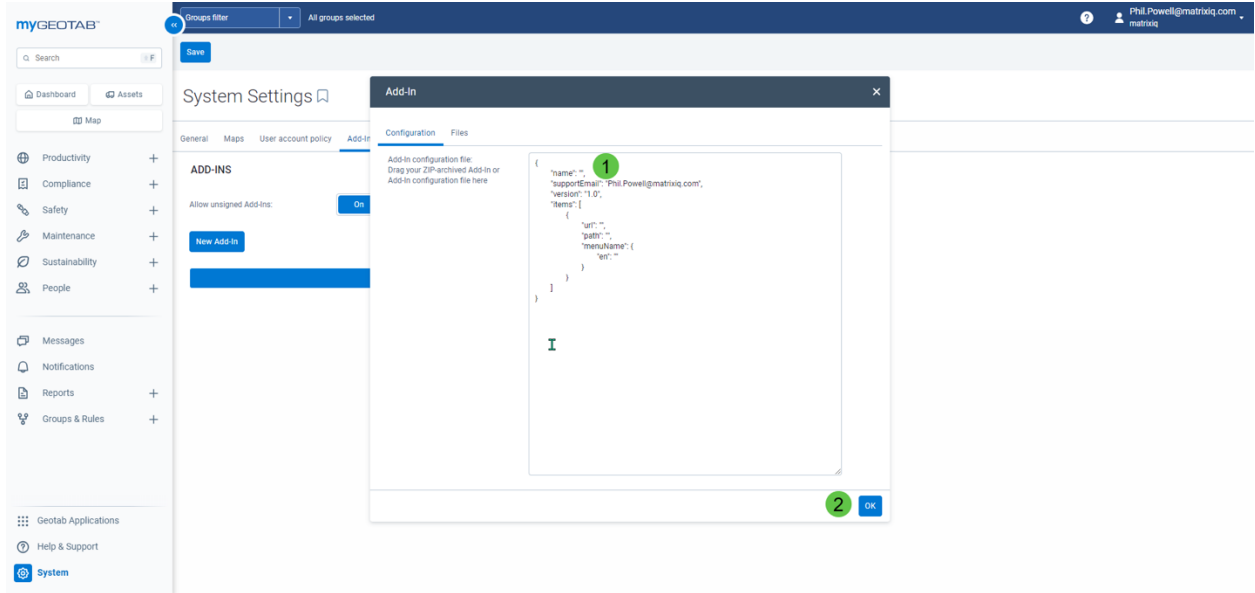
Install the Solution Add-In

Follow the steps below to install the Add-In. This workflow requires a .json file to structure the data and complete the installation. Follow the steps below to install the Add-In.

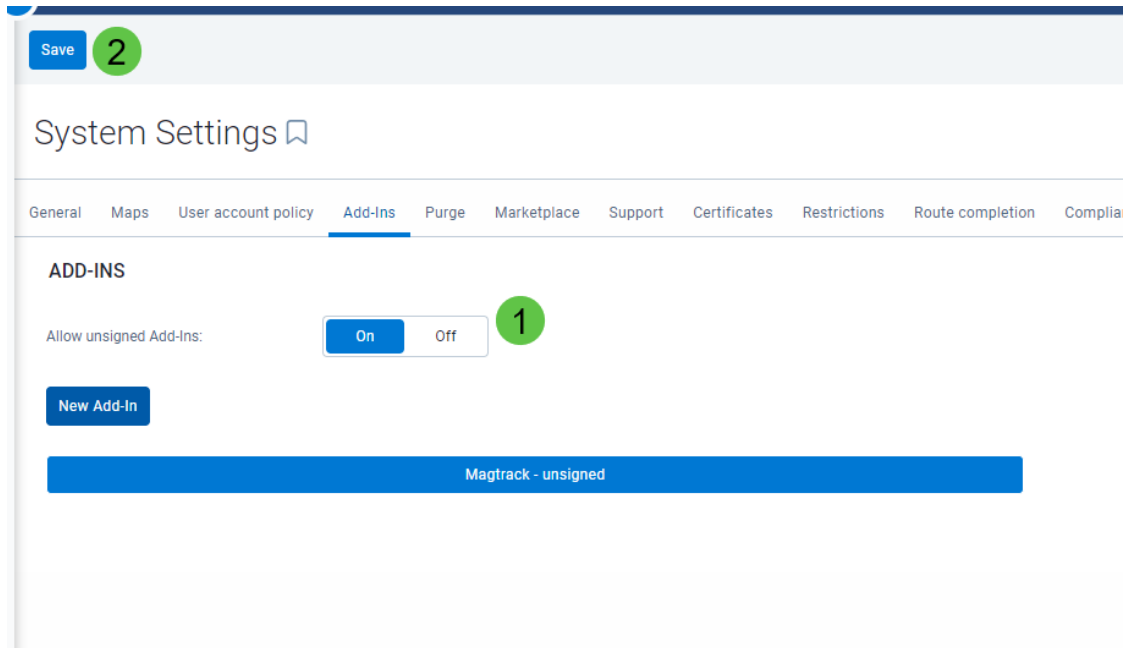
1. Log in to MyGeotab and navigate to (1) Administration > (2) System > (3) System Settings and select the (4) Add-Ins tab. Click the (5) New Add-In button.



- Paste the [.json code](#) below into the Add-In Configuration window (1), replacing the sample code that is already there. Click OK (2).



- In the System Settings page, (1) toggle Allow unsigned Add-Ins to On and (2) click Save at the top of the page. The Add-In is now installed.



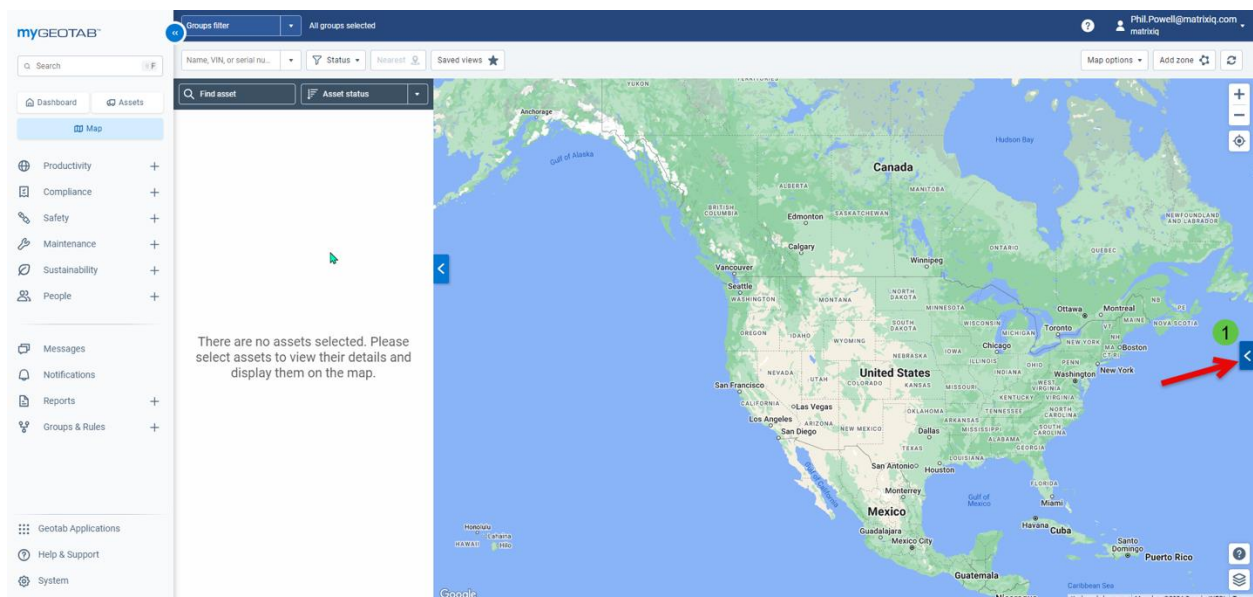
.Json File for New Service Account

Paste the .json file below to structure your service account data in step 2 of [Install the Solution Add-in](#).

```
{
  "name": "Magtrack",
  "supportEmail": "support@matrixiq.com",
  "version": "1.0",
  "items": [
    {
      "page": "map",
      "noView": false,
      "mapScript": {
        "url": "https://geotab.fth.cloud/addin.html?id=888888888888"
      }
    }
  ],
  "solutionId": "matrixIQMagtrack",
  "isSigned": false
}
```

Open the Add-In

To open the add-in if it is not open already, click the (1) left chevron (<) to open the MagTrack selector tool. Choose a device and the rest of the add-in will appear, the mode selector for GPS frequency and alert settings.



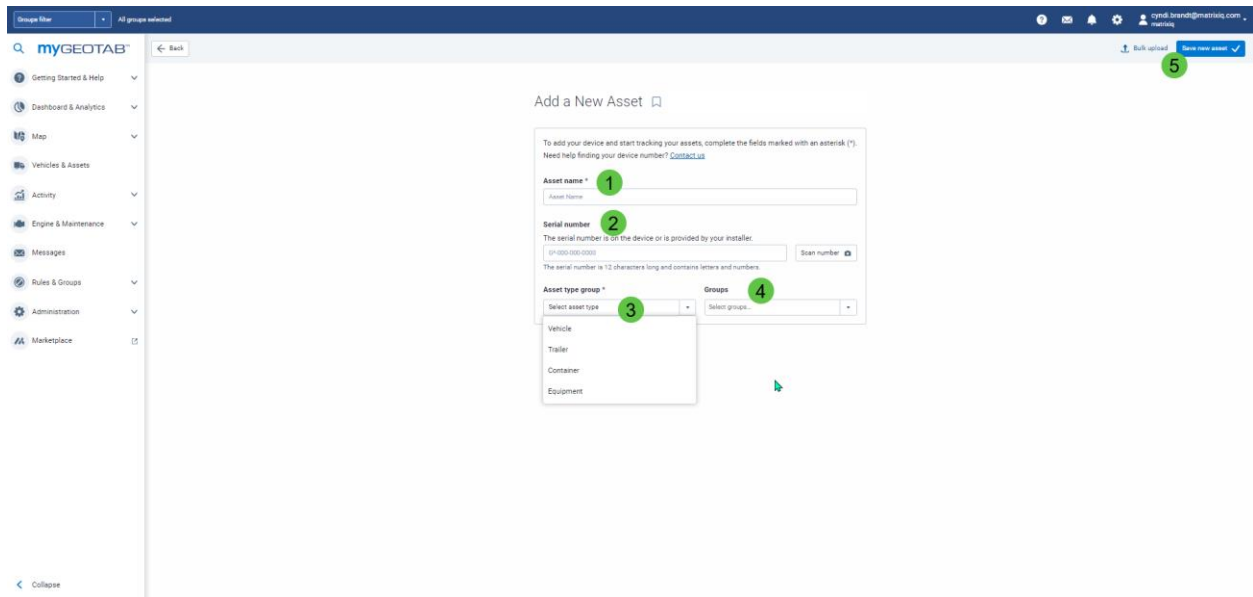
Adding Devices

Adding a New Asset in MyGeotab

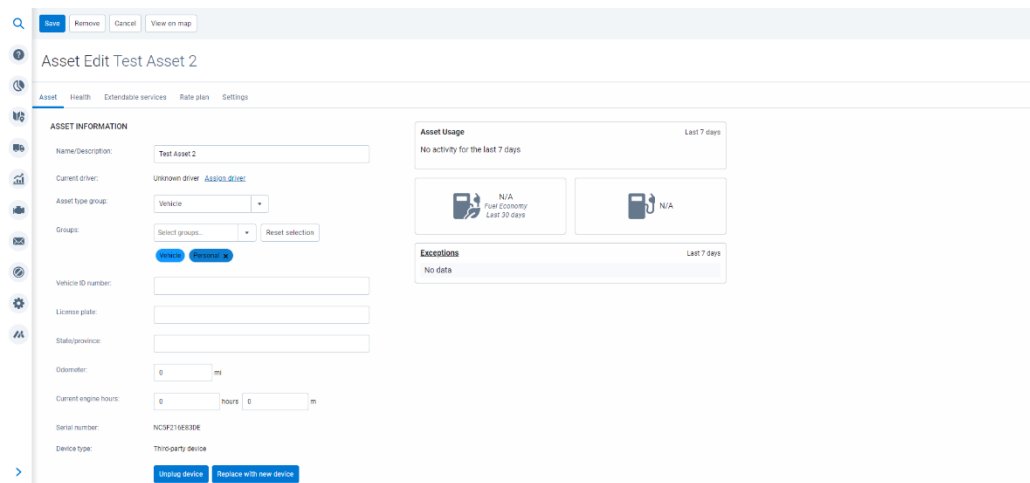
1. The device reseller will provide the Serial Numbers of the MagTrack+ devices.
2. Along the left side go to (1) Map > (2) Vehicles and Assets and click (3) + Add a new asset

Name	Current driver	VIN	License plate	Serial number	Odometer
351561115523546 Vehicle	None	Unknown	Unknown	NC01216AC4D9	0 mi
351561115524858 Vehicle	None	Unknown	Unknown	NC072166C30E	179 mi
351561115535896 Trailer	None	Unknown	Unknown		50 mi
COC72165A514 Vehicle	None	COC72165A514	COC72165A514	COC72165A514	1361 mi
Magtrack test Vehicle	None	ML59TYW	ML59TYW	C0972165A346	0 mi
Vehicle 1 Vehicle, Battery Electric	None	LRW3F7E86MC219108	Unknown	G92CTX3DVGUF	53757 mi
Vehicle 2 Vehicle, Gasoline or P...	None	LYVUZHSV3PB316862	Unknown	G9A1SVH6TTME	13853 mi

1. Fill in the required details of (1) Asset Name, (2) Serial Number, (3) Asset Type and (4) Group assignment. Press (5) Save New Asset to finish.



- Once you have added the asset to the system by clicking on 'Save New Asset,' you will be taken to the edit asset page where you can input data such as (1) Vehicle ID Number and (2) License Plate. Once you have finished press (3) Save in the top left corner.



Accessing and Navigating the System

Logging into your account

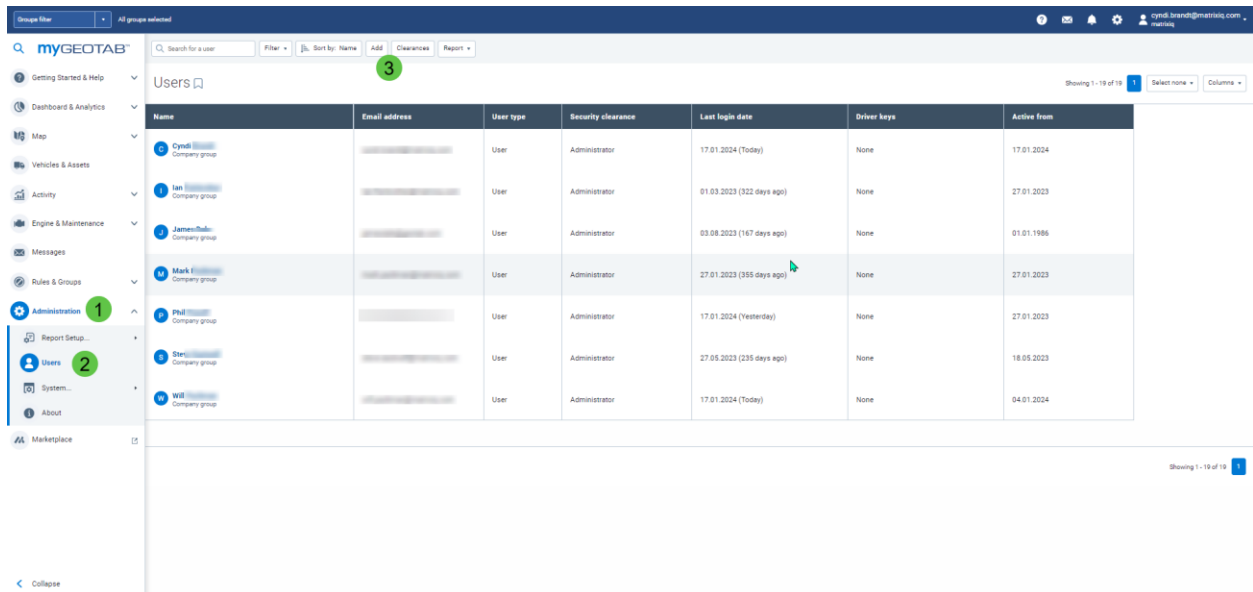
- Please go to the portal at <https://my.geotab.com/matrixiq/#dashboard>
- Enter your (1) Username and Password:



3. Press (3) Log in to access your account.

Adding users to Geotab

1. On the left side menu, go to (1) Administration > (2) Users.
2. Click on (3) Add to create a new user.



3. Fill in the required details such as (1) email and (2) name.
4. Choose (3) Security Clearance

Group filter

All groups selected

myGEOTAB

Getting Started & Help

Dashboard & Analytics

Map

Vehicles & Assets

Activity

Engine & Maintenance

Messages

Rules & Groups

Administration

Report Setup...

Users

System...

About

Marketplace

Cancel

Add User

User

Driver

UI Settings

Map Settings

Feature Preview

System Communications

Support

USER INFORMATION

User (Email):

1

First name:

2

Last name:

Designation:

Employee number:

Phone number:

Ext:

Group:

Select groups...

Data access:

Everything

Study

AUTHENTICATION AND SECURITY

Force password change on next login:

Yes

No

Authentication type:

Basic Authentication

Security clearance:

3

Default user

Comments:

MatrixIQ - Magtrack - Marketplace Partner Implementation Guide - Feb 24 - EU
 Not for Publication – © Matrix iQ Corporation All Rights Reserved

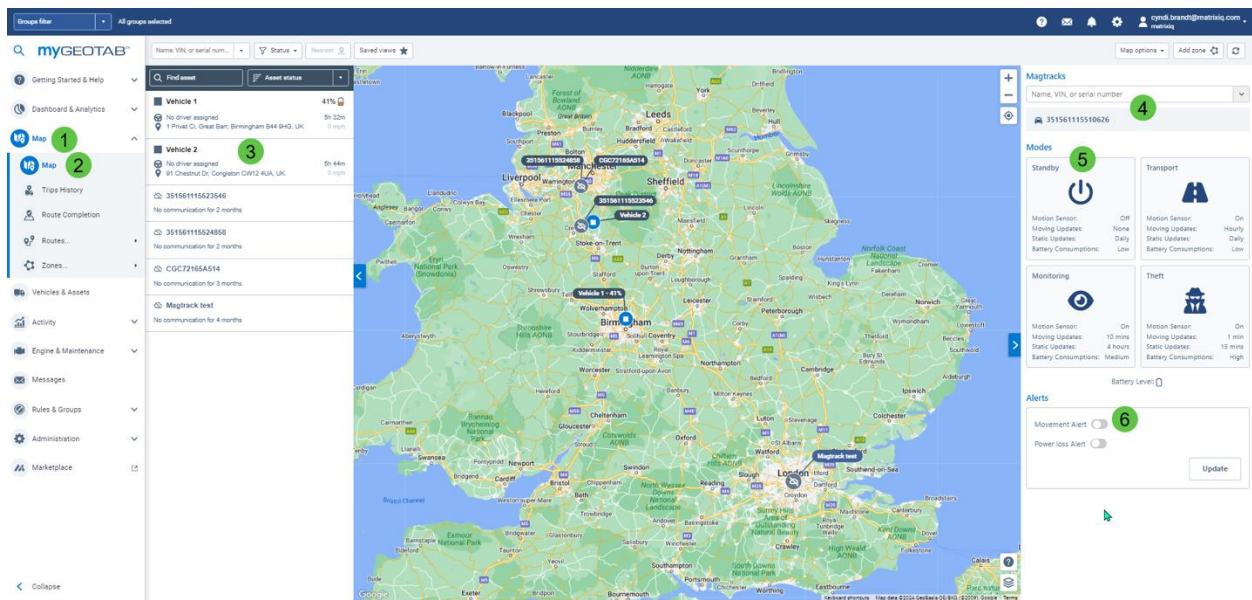
10
 February 2024

Navigating the System

Through the online tracking portal there are several key areas viable for the customer to track, locate and update their unit. Through the portal the customer can view the vehicle on the map, edit the vehicle details, change the mode of the MagTrack+, add an alert and add a new unit to their account.

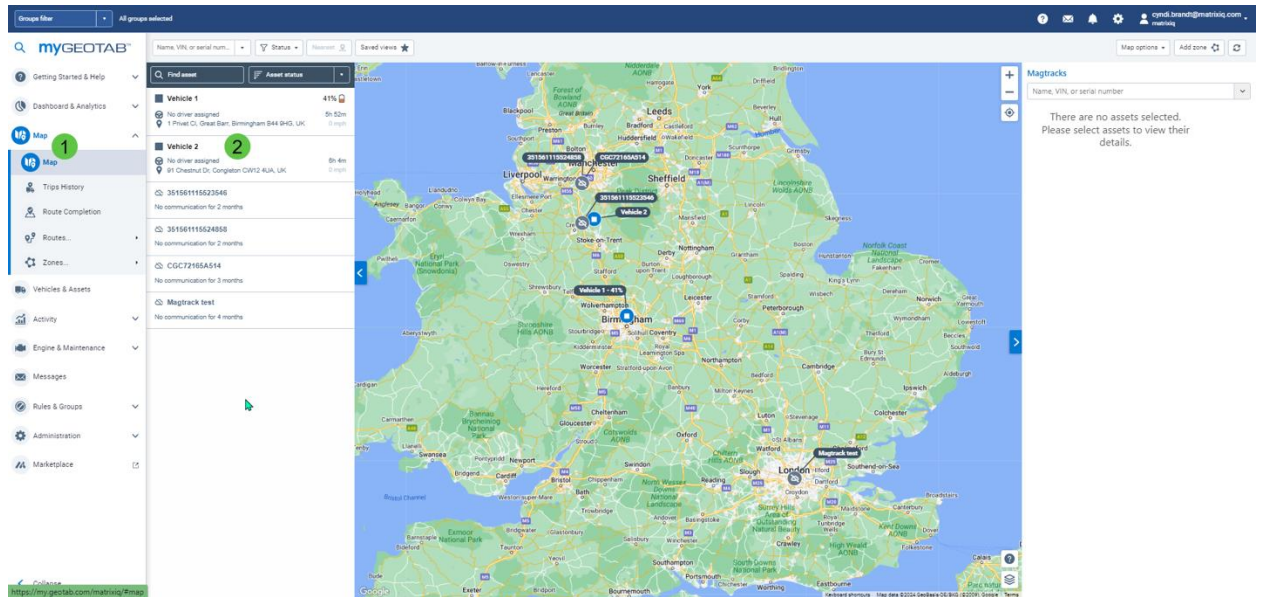
Tracking and Locating the Unit on the Map

1. Go to (1) Map and (2) Map (3) select the asset/vehicle you want to view.
2. To manage a MagTrack+ device, (4) choose from the drop down the IMEI#.
3. The ability to change the device (5) mode (frequency of reporting) is in this panel.
4. To enable (6) Alerts use the toggle on/off.

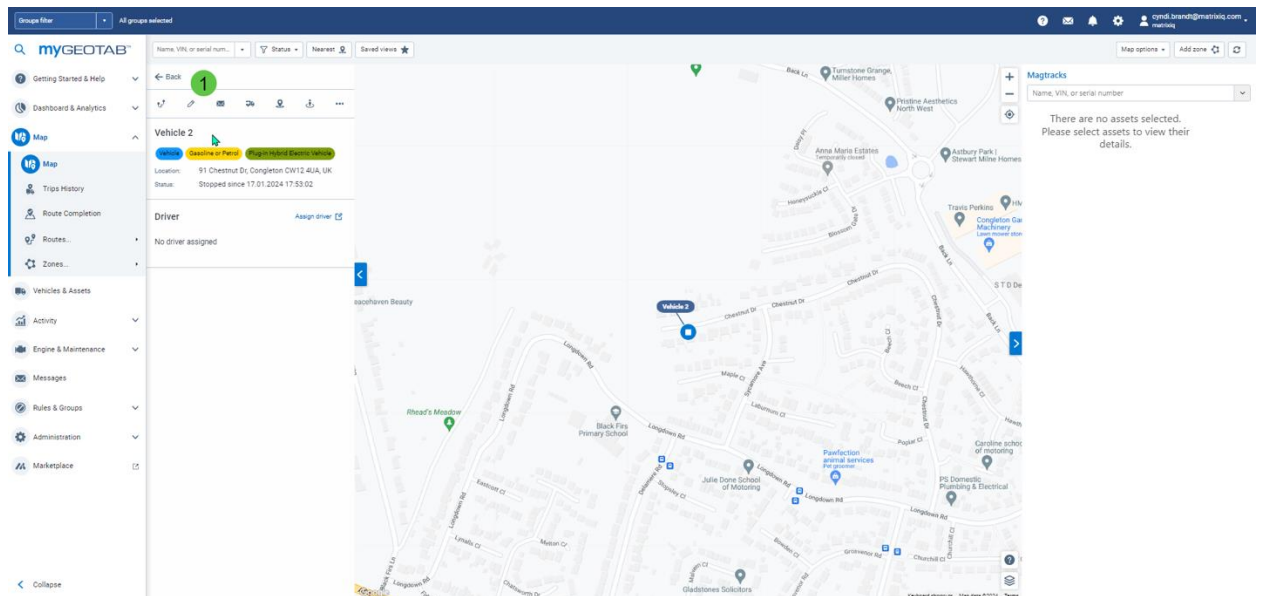


How to Edit Vehicle Details

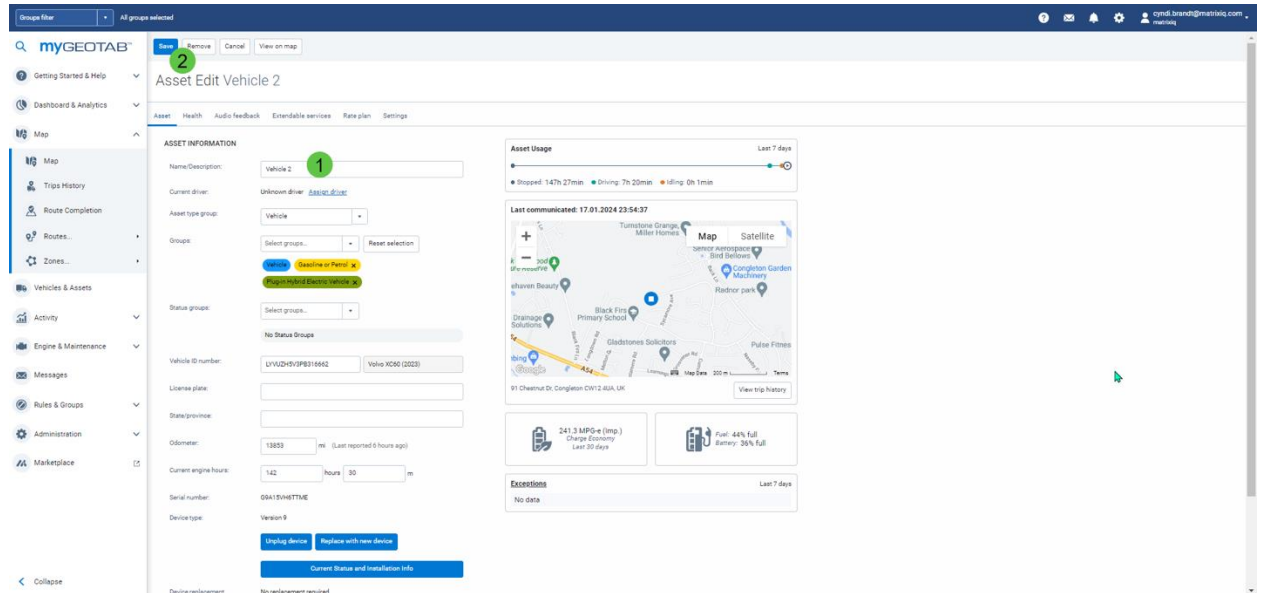
1. Go to (1) Map on the left side menu and select the (2) Vehicle you wish to edit.



2. Select (1) Edit Asset

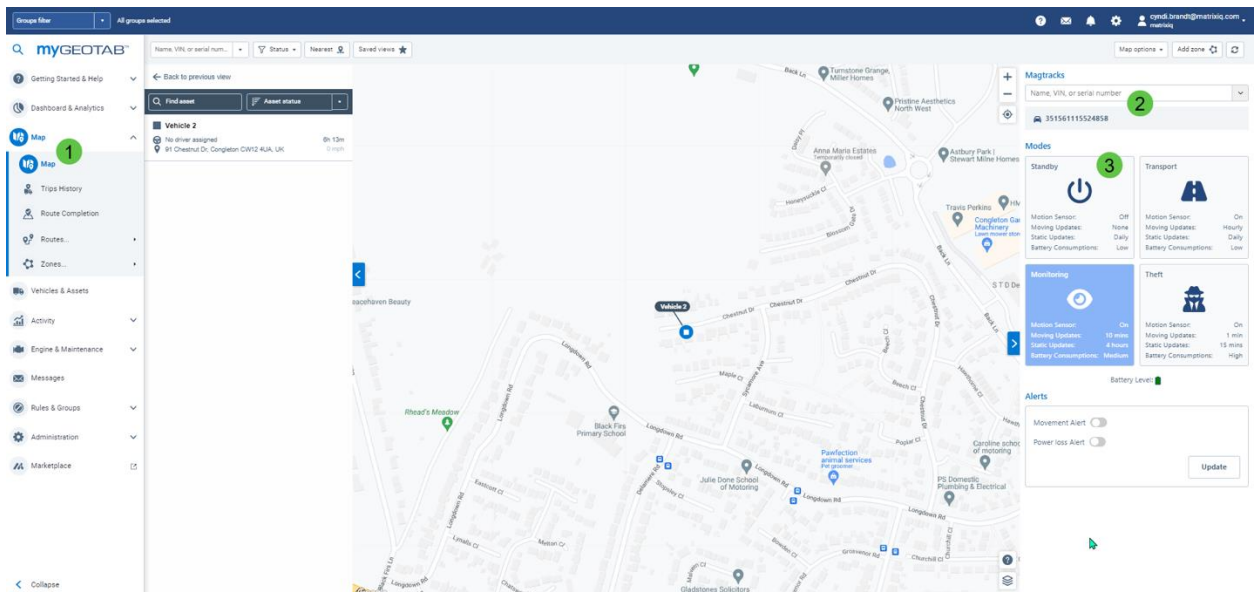


- Here you can edit vehicle details such as (1) Name/Registration/Mileage. Click (2) Save to keep the changes.



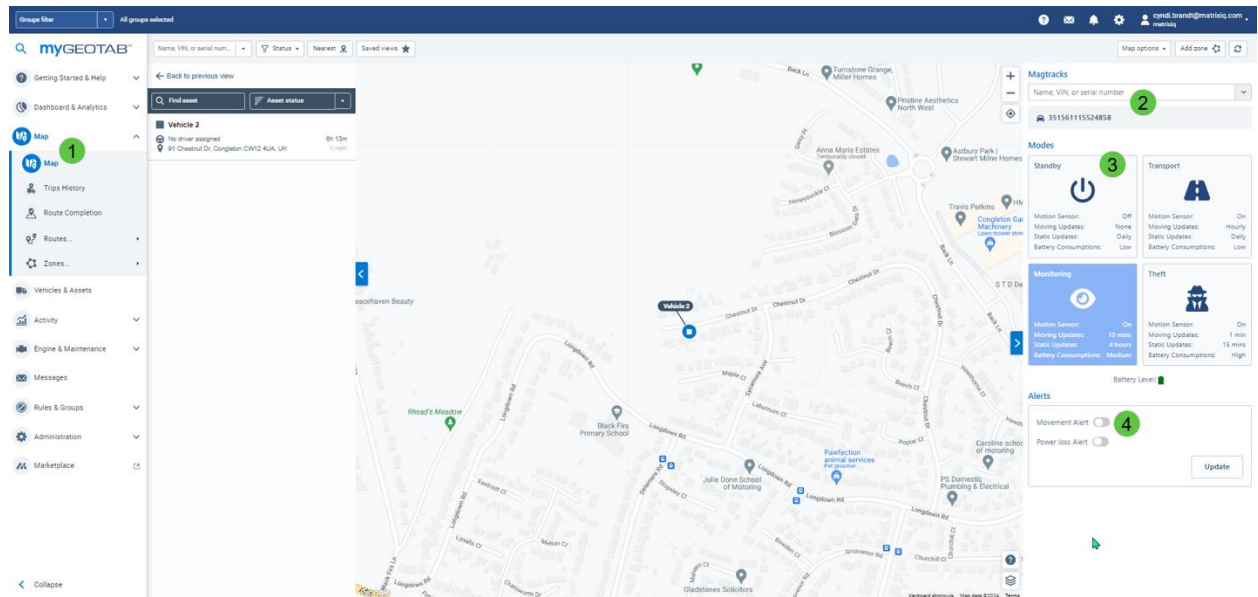
How to change the mode of the MagTrack+

- On the (1) Maps section, select the (2) Vehicle to change the Mode on from the drop-down list.
- (3) Select the new mode for the unit.
- The new mode will show as pending. When the unit next reports into the system, it will update the mode and then report in accordance with the settings of that new mode.



Adding an Alert

1. You can choose to receive an alert from the unit for either movement alerts or power loss alerts.
2. Go to (1) Maps, (2) Select Vehicle.
3. Under the (3) Modes is the (4) Alerts section. Here you can toggle the bar to activate or deactivate the alerts.



4. Once you have (1) activated the Alert, you must (2) add a recipient(s) for the alert by entering their email address and clicking on the '+' button. Press (3) Update in the bottom right to save any changes.

